

CHELTENHAM ART eBULLETIN

Your monthly guide to
the visual arts in the
Cheltenham area



Cover image - Anna Lansley

APRIL 2026

Our monthly guide to the visual arts in the Cheltenham area.

Published by ARTEbulletin, hello@artebulletin.co.uk

Sixteen Gallery

16 Rotunda Terrace, Montpellier Street,
Cheltenham, GL50 1SW

sixteengallery.com

Spring Gallery

14 Rotunda Terrace, Montpellier Street,
Cheltenham, GL50 1SW

springcheltenham.com

24 April – 6 May

Small Works - The Sixteen Gallery Collective Presents Small Works: A Collection Of Affordable Small Pieces Made By Its Members.



Visit sixteengallery.com for more information and news on all upcoming exhibitions at the gallery.

SIXTEEN ONLINE is an artist’s collective that helps emerging and established artists share their portfolios, find their audience and be part of a self-supporting community.

Made by artists for artists, they build on the back of the physical space at Sixteen Gallery in Cheltenham and bring together a digital space for artists to showcase their work, and a way for art lovers to discover and connect to new artists.



1 – 7 April

Ephemera - minor transient documents of everyday life. An exhibition of contemporary abstract painting and collage from artist **Tricia Crowther**



8 – 14 April, Private View, Friday 10 April, 6.30 - 8pm.

Signs of Hope, Laura Pedley – a new collection of painting, evoking the beauty of the world we live in.



29 April, - 12 May Private View, Open 10 - 5pm daily, late until 7pm Thurs and Fri Closes 1pm on final day). Open evening Thurs 30 April 6 - 8pm

Jane Foot – My Mind’s Eye – Intuitive Textural mixed media oil paintings



Our monthly guide to the visual arts in the Cheltenham area.

Published by ARTEbulletin, hello@artebulletin.co.uk

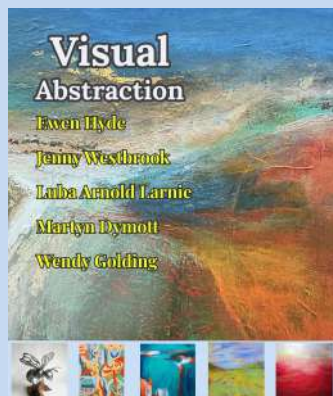
Gardens Gallery

Montpellier Gardens,
Cheltenham GL50 2XL

Gardensgallery.co.uk

1 - 7 April

Visual Abstraction - This exhibition brings together five distinctive artists whose practices explore emotion, spontaneity, materiality and intuitive expression through diverse mediums. Artists include: Ewen Hyde, Jenny Westbrook, Luba Arnold Larnie, Martyn Dymott and Wendy Golding.



8 – 14 April

Cheltenham Art Club Exhibition -

The Spring show has nearly ninety works of art for sale in a variety of media, sizes and styles. Browse the exhibition, vote for your favourite painting and chat to the stewards. There will also be a membership offer for anyone who might be interested. For more information about the club, please visit: cheltenhamartclub.co.uk



Gardens Gallery

Montpellier Gardens,
Cheltenham GL50 2XL

Gardensgallery.co.uk

15 - 20 April

Cheltenham Camera Club - Come and see the 2026 exhibition and gain as much enjoyment from looking at the images as the members have gained from capturing them. For more information about the club, please visit: cheltenhamcameraclub.co.uk



21 - 28 April –

Gallery closed for Jazz Festival set up

29 April - 4 May

Brushnotes - In this exhibition by **9 Artists Collective** will delve into the history of jazz, with a display of words and photographs that will follow its development through the decades and across the world.



For more information on all exhibitions and what's coming up, please visit gardensgallery.co.uk

Our monthly guide to the visual arts in the Cheltenham area.

Published by ARTEbulletin, hello@artebulletin.co.uk

The Wilson

Cheltenham Art Gallery and Museum
Clarence St, Cheltenham GL50 3JT
cheltenhammuseum.org.uk

**Tuesday to Saturday 10am to 5pm,
Sunday 10am to 4pm.**
The Wilson Kitchen is open
Mon – Sat 10am - 5pm, Sun 10 - 4pm

30 January - 10th May

Paula Rego:

Visions of English Literature presents three of the artist’s most ambitious and profound series of works in print making: Nursery Rhymes, Peter Pan and Jane Eyre. Created across a decade of her life, the works offer an intimate portrayal of the artist’s lifelong fascination with folklore, fairy tales and literature.




Presented by Hayward Gallery Touring, this exhibition offers audiences the chance to experience the work of an internationally celebrated artist whose bold, uncompromising vision continues to resonate today.


Image credit: Paula Rego, The Return, 1992, coloured etching and aquatint. Copyright Ostrich Arts Ltd | Paula Rego Estate. Courtesy Ostrich Arts Ltd and Cristea Roberts Gallery.


The Wilson


Cheltenham Art Gallery and Museum
Clarence St, Cheltenham GL50 3JT
cheltenhammuseum.org.uk


**Wednesday, 1 April, 6pm - 9pm,
Wilson Nights:**

 **The Joy of Making** – slow stitching, scraps & a growing community quilt (6-9pm)

 **Tewkesbury Pub Singers** – uplifting live choir (6–6.30pm)

 **Ideas Assembly** – creative thinking meets hands-on making (7-9pm)

 **Bleephaus** – dive into synths, sound & experimental gear (6.30-8pm)

 **Improvisers Orchestra** – open, playful music-making -all welcome (6-8pm)

A lively, hands-on evening of making, music and experimentation at The Wilson. Slow down, get creative, try something new and connect with others across the gallery.

Free to attend. Drop in anytime.



Our monthly guide to the visual arts in the Cheltenham area.

Published by ARTEbulletin, hello@artebulletin.co.uk

Lansdown Art Studios

Unit 1A Lansdown Industrial Estate
Gloucester Road
Cheltenham GL51 8PS

Saturday 11 April, 10am – 4pm

**Artists at Work & Open Studios -
Lansdown Art Studios**

Come and meet the artists, see where the work is created, and buy art directly from the makers.

Featuring 20 eclectic artists, from jewellery and ceramics to painting, printmaking and fine art — and everything in between. A relaxed chance to explore the studios, discover new work and support local artists.

The largest artist studio community in Cheltenham with free parking on site. Come along, explore the studios and find something unique to take home.



FOR more information about the studios please visit:
lansdownartstudios.com



FRESH ART FAIR

freshartfair.net

24 - 26 April 2026

**Fresh: Art Fair
Cheltenham Racecourse**

Private View

**Thursday 23rd April 5.30 - 9pm
Free Wine: First Pick Of The Art**

**Friday 24 April 11 – 6pm
Saturday 25 April 11 – 6pm
Sunday 26 April 11 – 5pm**

Tickets

Ticket Prices Will Be Announced In Early 2026. Children under 16 admitted free every day.

This year’s Cheltenham fair brings together 50 galleries from the UK and beyond, and with 20 galleries new to Fresh: Art Fair there will be a feast of exciting new original artwork for you to browse and buy. With paintings, prints, photography and sculpture in a broad range of styles and prices, there’s something for every taste and budget.



Our monthly guide to the visual arts in the Cheltenham area.

Published by ARTEbulletin, hello@artebulletin.co.uk

The Museum in the Park
 Stratford Park, Stratford Road.
 Stroud GL5 4AF
museuminthepark.org.uk

... until 30 April

Print in the Park To celebrate 20 Years of the Gloucestershire Printmaking Coop, and 25 years of the Museum in the Park, over 40 of the Coop's members are making prints that evolve from looking at the collections in the museums or have taken inspiration from the incredible grounds and surrounding arboretum.

Workshops:

1 & 8 April Drop in 10.30-12.30pm
 Philippa C Thomas & Hector MacInnes
 Zine Team (for Children and their Grown Ups) £2

Friday 17 April 10.30am - 3.30pm
 Print Tree Rings with Charlie Ash £85

Friday 21 April 10.30 3.30pm
 wood engraving with Peter Collins £85

To book visit:
museuminthepark.org.uk/

Print Fair
 18 & 19 April, 11am – 4,30pm



New Brewery Arts
 Brewery Court, Cricklade St,
 Cirencester GL7 1JH
newbreweryarts.org.uk

Saturday 25 April, 10am–4pm
Free entry and all are welcome.

New Brewery Arts is thrilled to announce **Spring Fling**, a special Open Studios celebration led by the talented craftspeople, makers and creatives who work in the studios at New Brewery Arts.

You are invited to step inside working studios, meet skilled makers, watch live demonstrations, try hands-on activities, and discover limited-edition handmade work – including exclusive collections launching on the day.

What's On:

- **Explore** working studios.
- **Watch** live craft demonstrations.
- **Try** making for yourself
- **See** heritage crafts being made
- **Shop** limited edition handmade work
- **Talk** directly to makers
- **Enjoy** exclusive maker discounts



New Brewery Arts | CIRENCESTER

Our monthly guide to the visual arts in the Cheltenham area.

Published by ARTEbulletin, hello@artebulletin.co.uk

GPC

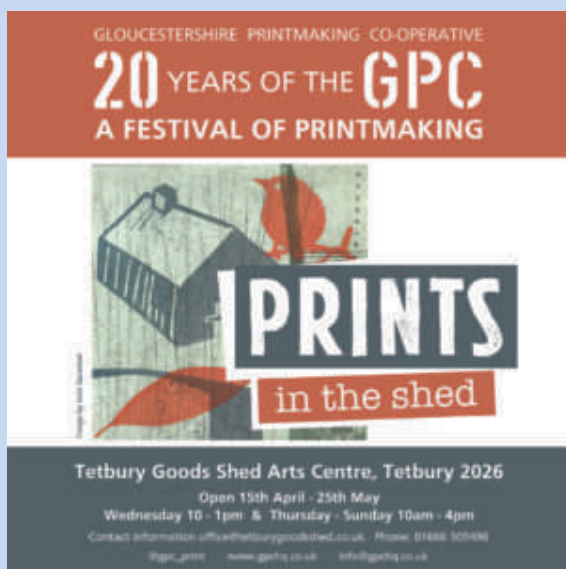
Griffin Mill, Stroud.
www.gpchq.co.uk

The GPC are excited to announce they will be presenting a series of Events in 2026, as it is their **20 Year Celebration of the Gloucestershire Printmaking Coop!**



... until 30 April - Additional works at the **GPC Gallery** from the **Prints in the Park** exhibition at **The Museum in The Park** – for all the info see separate listing including workshops at the museum

15 April – 25 May, 10-4pm
Wed 10-1pm and Thurs-Sun 10-4pm
Prints in the Shed
Tetbury Goods Shed



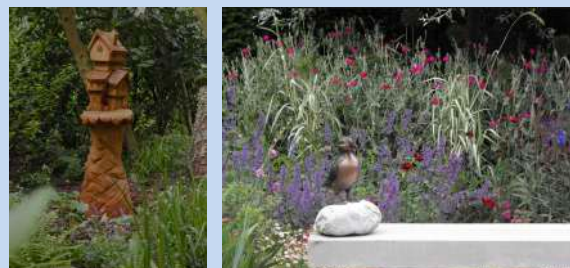
WORKSHOPS & COURSES - For a list of current workshops please visit the website: gpchq.co.uk

Showborough House
Affordable Garden Art Exhibition
Showborough.com

30 April – 14 June
10:30am to 4pm
Closed Monday, Tuesday, Wed

Showborough has hosted an Affordable Garden Art Exhibition since 2008.

It showcases sculpture in all media and styles by emerging and established British artists, many from Gloucestershire and surrounding counties. All work is for sale. There are over 200 pieces by about 90 artists.



Our monthly guide to the visual arts in the Cheltenham area.

Published by ARTEbulletin, hello@artebulletin.co.uk

Nature in Art Museum & Art Gallery

Main A38 Twigworth
Gloucester GL2 9PA
natureinart.org.uk

Opening times: Tuesday - Sunday (& bank holidays) 10am - 5pm

31 March - 10 May

Sacred Earth: Water, Tree, Stone

A fascinating exploration of the earth's elements, using the earth's elements



until 12 April

Wildlife Photographer of the Year -

The world-renowned exhibition, now in its sixty-first year and on loan from the Natural History Museum in London, featuring some of the most exceptional nature photography taken today from across the globe..

... 5 April

GSBI Annual Exhibition

Founded in 1993, the Gloucestershire Society for Botanical Illustration (GSBI) grew out of botanical art classes held in Cheltenham and Stroud with Michael Hickey, botanist, writer and illustrator. The annual show, as usual, exhibits a variety of styles and mediums. Free to enter, in the Education Centre

PLUS - NIA renowned artist residency programme. with new artists every week. Come and see what they're creating and have a chat.

The Gate art space

21 Westgate Street
Gloucester GL1 2NW
Gloucestercontemporaryartists.art

30 March - 12 April

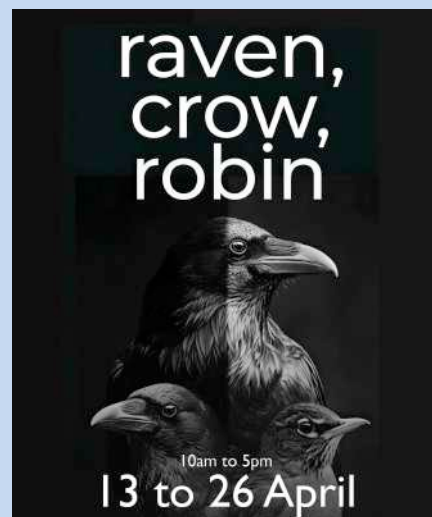
Safari - An exhibition of paintings and drawings by African-born artists Gilly Hill and Sue Jarvis



13 - 26 April

raven, crow, robin

Group show by Dominic Momcilovic, Louise Hocking and Gaye Watson



The Gate is an affordable, not-for-profit art space run by artists for artists and craftspeople. The Gate is a great place to get your work seen (and sold)

contact@goucesterontemoirsryartists.art

Our monthly guide to the visual arts in the Cheltenham area.

Published by ARTEbulletin, hello@artebulletin.co.uk

Gloucestershire Guild

18 Rotunda Terrace
Montpellier Street
Cheltenham GL50 1SW
guildcrafts.org.uk

The Gloucestershire Guild Shop is the place to buy contemporary craft in Cheltenham. You will find beautiful handmade work by our selected professional makers including contemporary jewellery, ceramics, textiles, furniture, leatherwork, glass and baskets.

Shop Open
Monday - Saturday 10am - 5pm.

Call **07562 516545** or email
guildcrafts.shop_18@icloud.com

Founded in 1933, the purpose of the Gloucestershire Guild is to foster and promote fine craftsmanship and good design. These aims came out of the vibrant Arts and Crafts Movement in the Cotswolds at the turn of the 20th century.

The Guild's members are all professional makers. They are amongst the top craftspeople in the UK working across many disciplines including ceramics, glass, woodwork, textiles, jewellery and leather goods, creating unique functional and decorative objects.

Visit [guildcrafts.org.uk /pages](http://guildcrafts.org.uk/pages)



TWO
Plein Air Competition 2026

Painswick Rococo Garden
Registration is NOW LIVE
Saturday 16 May 10am – 4pm

Come for the day, paint and enjoy the beautiful Rococo gardens. Have some fun, get your work judged by experts in their field and a chance to win some amazing prizes.



Plein Air Cheltenham
Montpellier Gardens
Registration is NOW LIVE
Saturday 6 June 2026, 10am – 4pm

The third plein air ART competition, in the beautiful surroundings of Montpellier Gardens, Cheltenham, with prizes to be won.



For more information, please visit:
wtscollective.co.uk/shop

Our monthly guide to the visual arts in the Cheltenham area.

Published by ARTEbulletin, hello@artebulletin.co.uk

THE YARD

Upper Bath Street, Cheltenham
theyardartspace.com

the **yard:ARTspace** offers a focal point for those who want to make printmaking an important part of their creative process.

Summer Term starts 22 April

Wednesday printmaking classes, 6.30 – 9pm. Evening space available

Simple Artist books with Mixed Media Techniques. 10-week course, **1.30 – 4pm** – 1 space left

25 – 26 April

Mixed Media Sketch book techniques. Includes paper lithography. Using Gum Arabic and the humble black-and-white photocopy as your ‘plate’, you can make prints of photographic images. Together with a variety of mixed media techniques using ink, oil pastel, bleach and acrylic learn how to create personal sketch book pages and artist books.
 Cost **£200** to **include most materials** (Please bring strongly contrasting toner photocopies and sketch books).



For all details visit theyardartspace.com or email suebrown@theyardartspace.com



Nicky Millington
 The Art Studio
cheltartstudio.com

Art Classes –

Children’s Art Club –

Tuesday Y7 - Y9 5 - 6.30pm
 Wednesday Y6 - Y7 5 - 6.30pm

£18 per week, paid for in advance for a course of between 6 and 8 weeks.

Adults:

- Tues, Wed, Thurs & Fri 10am – 12pm
 - Thursdays 2 - 4pm

£20 per week, paid for in advance for a course of between 6 and 8 weeks.

The Art Studios art classes give adults and children the opportunity to discover and develop their creativity, increasing their skills of observation and application of a wide range of different media.



For more information and how to book, please visit: cheltartstudio.com

Our monthly guide to the visual arts in the Cheltenham area.

Published by ARTEbulletin, hello@artebulletin.co.uk

Alexandra Woods Art Classes alexandrawoods.com/shop

At Ritual Coffee Brew Bar and Kitchen, Unit 31 - 32, Lansdown Industrial Estate, Cheltenham, GL51 8PL.

Beginners Painting With Colour Workshop - Join this afternoon workshop and escape into a world of colour and painting. The group size is limited so that you receive plenty of individual guidance and encouragement. **£30** all materials and equipment will be provided. Just book and join us!

Wednesday 22 April , 3-5pm

Portrait Drawing Workshop,
Ideal for beginners
Saturday 25 April 10-4pm,
£75 pp inc materials

Saturday 25 April, 10 - 12.30pm,
£40 pp inc materials

At Cheltenham School of Fine Art
Painting And Drawing workshops, for
beginners **14 April - 19 May**
Every Tuesday 2pm – 4.15pm
£30 inc materials

14 April - Drawing shapes with
perspective

21 April - Light and shade
28 April - Blending with paint
5 May - Shadows
12 May - Mixing and matching colours
19 May - Composition for beginners

To book visit the website
alexandrawoods.com/shop

Watch This Space Wtscollective.co.uk/shop [@wtscollective](https://www.instagram.com/wtscollective)

More workshops now **LIVE** in the shop

Evening at Hatchard's 6.30 - 8.30pm

21 April - Spring wreath making, **£70**

5 May - Create your own essential oil product, **£55**

2 June - Hand building Mini Ceramic Jug **£50**

Daytime, Sue Ryder Community Hub

17 April - Ceramic animals **£65**

15 May Collage Print Workshops
(10-3pm)

19 June - Create your own essential oil product, **£55**

Come with friends, or as a solo creative. Learning a new skill with our expert makers, creating something to be proud of at the end of each session.



Next Artisan Market Date:
14 June, 10-3pm at Dunkertons

For more information and how to book please visit: wtscollective.co.uk/shop

WATCH THIS SPACE

Our monthly guide to the visual arts in the Cheltenham area.

Published by ARTEbulletin, hello@artebulletin.co.uk

Cheltenham School of Fine Art

32 Wellington Lane
Cheltenham, GL52 2AG
cheltfineart.co.uk

23 -27 May

Cheltenham School of Fine Art Wellington Lane Group – Exhibition & Sale of Recent Work



The Wellington Lane Group comprise Viv Ayres, Jessie Carr and Tom Kane. All three are established artists and teach at Cheltenham School of Fine Art.

Summer Schools & Workshops

Come and try your hand at watercolour, still life, life drawing or portrait. All our taught weekend workshops and summer schools include materials and are suitable for levels of ability and experience. These are adult workshops.

- **Saturday Workshop 2 May**
Still Life in Oil and Acrylic
- **Saturday Workshop 3h May**
Landscape in Oil and Acrylic
- **Workshop 20 & 21 June**
Portrait & Life Drawing Weekend
- **Tuesday 11 - Thursday 13 August**
Human Form Summer School,

Summer School, 18 - 20 August
Mixed Media & Abstraction

Further details and booking online
cheltfineart.co.uk or call **07522 003 024** or cheltfineart@proton.me for further information.

Gemma Hastilow Art Classes

gemmahastilow.co.uk

Gemma Hastilow - Art Classes

Weekly classes in Winchcombe and Bishop's Cleeve.

CLASSES:

- **Mondays** - Life Drawing: Hone your drawing skills working from live models.
- **Tuesdays** - Art for beginners Unleash your creativity, learning all the basics.
- **Wednesdays** - Beginners Acrylic Painting:
- **Fridays** - Watercolours for Beginners

Saturday 18 April, 1pm - 4pm

Drawing Clouds in Pastels

Capture the drama of an ever-changing skyscape with vibrant colours and a soft touch. **£35pp**



9 May 10-3pm - Weekend

Watercolours - Botanical Studies of Spring Wildflowers. **£60**

For all info, including costs and how to book on the **2026** programme of **weekend workshops, weekly classes and more**, visit gemmahastilow.co.uk

Our monthly guide to the visual arts in the Cheltenham area.

Published by ARTEbulletin, hello@artebulletin.co.uk

Gas Green Community Centre
Baker Street, Cheltenham GL51 9HQ
artforallmentalhealth.org.uk

Gas Green Community Centre
Baker Street, Cheltenham GL51 9HQ
flowilde@hotmail.com

Art for All Mental Health is an Arts and Mental Health Charity. Art for All Mental Health has a new website and has an expanded range of groups.

They aim to help people achieve sustained mental well-being through the practice of being creative. Offering a variety of groups to take part in, these including: **general painting and drawing, nature journaling and photography, craft, mindful art, women's group and printmaking.**

All classes are facilitated by experienced Arts and Mental Health tutors and are free* to attend. This includes materials, though you are welcome to bring your own (a voluntary contribution is suggested to help towards refreshments and materials of **£2/class**).

To enquire/apply for a place in one of their groups please visit :

artforallmentalhealth.org.uk
or contact
enquiries@artforallmentalhealth.org.uk



Life drawing tutored session in Cheltenham

3rd Saturday of the month.

10 – 12pm - £15 session

2026 Dates - 18 Apr, 16 May, 20 June



Tutor: Julie Smith - This session is for any skills level, from novices to practicing artists, who want a supportive and stimulating environment in which to learn about the perceptions and mark-making capabilities required for making successful drawn responses from the nude figure. Julie comes with many years' experience working with artists, students and interested individuals.

What should you bring to the class?

- Pencils & charcoal, & any materials you like to use,
- A2 cartridge paper pad, drawing board, masking tape, clip, sketchbooks etc. · Erasers – plastic & putty rubber

We will be working with chairs rather than easels. You are welcome to bring your own easel if you have one.

e-mail Julie at flowilde@hotmail.com

Our monthly guide to the visual arts in the Cheltenham area.

Published by ARTEbulletin, hello@artebulletin.co.uk

**The Arty Crafty Bunch.
At Como Blend, 2 Station Mews,
Old Station Drive, Leckhampton**

Creative Coffee

Every Monday, 1 - 2.30pm,

Nurture your creative side with a chance to natter Painting, crafting, drawing No artistic experience necessary. **£12** a session inc all materials and artisan coffee

Monday 6 April - No session (Easter Monday)

Monday 13 April - Paisley Press Prints

Monday 20 April - No session

Monday 27 April - Delauney Rhythm Paintings (acrylic)

Creative Coffee will return in June

Arty Craft Evenings - Busy during the day? Try the evening workshops. Come and unleash your creativity. **£25 pp per workshop. 6 - 8.15pm**

For more information on current sessions and to book email Sarah at theartycraftybunch@gmail.com or visit: theartycraftybunch.com

**"Creativity is contagious, pass it on."
Albert Einstein**

**Pete Garrard
Ceramic Courses**

Spring Hand built pottery and ceramic sculpture course

Term 3 (8 week) 20 April - 15 May and 1 June - 26 June

The 28 hours/8-week course costs **£266 tuition**

A ceramic-hand-building course, with a wide range of sculptural or functional projects that Pete uses to guide the complete beginner through a variety of basic techniques. More experienced artists are supported in the development of their own projects. Classes are limited to a maximum of 10 and students are encouraged to develop their own style and interests. Pete is a professional tutor with extensive experience in secondary and further education and a practising artist and sculptor (1st class BA hon).

Following days and times available:

Mondays 5.45-9.15pm

Thursdays 1-4.30pm

Fridays 9.30am-1pm

Each session is 3.5 hours which gives you plenty of time to be creative and enjoy a cuppa and cake or biscuits during our break.

For more information contact:
petergarrardceramics@yahoo.com

You can see the work of Pete and his students: [@petegarrard](https://www.instagram.com/petegarrard) or FB [@Peter Garrard Ceramics](https://www.facebook.com/PeterGarrardCeramics)



Our monthly guide to the visual arts in the Cheltenham area.

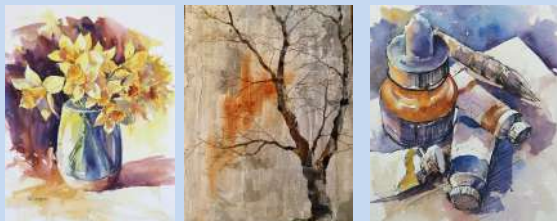
Published by ARTEbulletin, hello@artebulletin.co.uk

Nicky Harvey Workshops
artworks-glos.co.uk

Nicky Harvey Workshops

Highbury Church Hall in Cheltenham

4 April, 10-4pm - Spring landscapes in acrylics with Nick Dawe at **£65**.
3 SPACES LEFT



For More Information On All Other Workshops and Locations Coming Up Visit **Artworks-Glos.co.uk**.
Or call **Nicky** on **07531 837045**



Nature Journaling

Classes with Debbie Kersley

Nature Journaling is a gentle, creative practice of observing and recording the natural world. Through drawing, writing and noticing, we deepen our connection to nature and to ourselves. Everyone is welcome.

- Practice simple drawing & observation skills
- Create a personal record of the seasons
- Grow creativity and mindfulness.
- Slow down and notice more

At Debbie's studio in Cheltenham (GL53), outdoors and online.

Mondays 6:30-8:30pm

Tuesdays 10:30-12:30pm

Wednesdays 6:30-8:30pm

Monthly 'Oak Hour' on Lotts Meadow: Free/ Pay what you can. More outdoor 'Tree Hours' to be announced.

More outdoor 'Tree Hours' to be announced.

4-week block: £60

Taster and half-term sessions: £15

Contact Debbie to book a Taster session during a 4-week block.

Details and booking here:

<https://buytickets.at/debbiekersley>

hello@debbiekersley.co.uk

07971 106157



Our monthly guide to the visual arts in the Cheltenham area.

Published by ARTEbulletin, hello@artebulletin.co.uk

Oil Painting Tuition Jessicableasbyart.com

One to One Oil Painting

Private, personalised oil painting instruction tailored to your skill level and artistic goals. Perfect for beginners through to advanced artists.

Sessions led by professional painter Jessica Bleasby BA/Hons (Fine Art Painting). Flexible scheduling. In person at studio/location.

You will learn:

- Colour theory and mixing –
- Understanding all tools and materials and mediums
- - preparation and planning an artwork
- - painting and blending techniques and much more

Choose your area of interest, still-life, landscape or portrait. Explore your own style from gestural, impressionistic to photorealistic.

Book your first session today
(2 hr recommended for first session)
£40 per hour or £70 for 2 sessions

Call **Jessica Bleasby** on **07846478170**
or email: jessicableasby@hotmail.com



The Arts Society, Cheltenham

**The Pavilion, Hatherley Lane,
Cheltenham GL51 6PN**

Tuesday 14 April at 7.15pm

Lecture: **And So To Bed**

Lecturer: **Janusz Karczewski-Slowikowski**

This lecture traces the significance and use of beds from the medieval period through to the 18th century both in terms of their association with the highest level of society as expressed through the great 'State Beds' and also the history of their construction, decoration and the, often costly, textiles associated with them. The significance of beds through the ages can be judged by the prominence given to them in wills and inventories - Shakespeare, in his will, left his wife Anne "my second-best bed" - and modern-day audiences may be surprised to learn that in times gone by, married or single, rich or poor, one never slept alone...

The lecture is free to members and visitors are welcome for a fee of **£8**

Cafe Arts, a regular informal, morning social event

Tuesdays, 10.30am - 12
**The Bowling Club, Suffolk Square,
Cheltenham GL50 2DX**

Cafe Arts will recommence in Sept '26
Cafe Arts is open to both members and visitors for a **cost of £6** for unlimited coffee and delicious biscuits

For more information about these events contact

info.cheltenham@theartsociety.org

Our monthly guide to the visual arts in the Cheltenham area.

Published by ARTEbulletin, hello@artebulletin.co.uk

The Arts Society, Painswick
theartsocietypainswick.org

Beacon Hall
 The Painswick Centre, Bisley Street
 Painswick, Stroud, GL6 6QQ

Thursday 9 April 11am

Notre Dame de Paris - Its iconic status in French history - Carole Petipher

In December 2024, Notre Dame Cathedral in Paris, often referred to as the Soul of the City, reopened to the public after a devastating fire had threatened to destroy it 5 years earlier. A seemingly impossible target had been set by the French President to rebuild; yet huge sums of donated money and teams of expert restorers ensured the timescale was met. Such is the symbolic power of this cultural icon in the psyche of the French people and indeed people beyond.

Guests are welcome for a fee of **£10**.

For more information, please contact

Painswick@theartsociety.org



History of art classes
 with Sarah Middleton
sarah-middleton.co.uk/shop

History of Art lectures - either online or at a Cotswolds venue.

Sarah aims to bring artworks and the personalities who painted them to life in a really fun and engaging way, through in-person lectures, online lectures, tours and talks all are available to buy in the online shop.

16 & 23 June, 6pm

Double Acts:

Barbara Hepworth & Ben Nicholson
 at Jacksons Art Stroud, **£30**

Tuesday 16 June

Barbara Hepworth

Tuesday 23 June

Ben Nicholson



Please visit:

sarah-middleton.co.uk/shop for all lectures and venues coming up ..

Our monthly guide to the visual arts in the Cheltenham area.

Published by ARTEbulletin, hello@artebulletin.co.uk

Cheltenham Camera Club
cheltenhamcameraclub.co.uk

Cheltenham Camera Club

**Every Thursday evenings, 7.30pm,
 September to May
 Holy Apostles Church Hall, London
 Road, Charlton Kings, Cheltenham,**

The club is the sixth oldest photographic club in the UK, having been established 161 years ago in the pioneering days of photography. It has thrived throughout the intervening years and today, CCC has over a hundred members and organizes the internationally acclaimed 'Cheltenham International Salon of Photography' which annually receives over 8000 images from around the world, and the annual Gloucestershire Young Photographers award. The club organises a programme of talks by nationally known photographers, monthly competitions, club outings, training sessions and a friendly environment supporting the development of members' photography.

If you are interested in Photography, then why not join CCC?

For all the details, visit:

cheltenhamcameraclub.co.uk



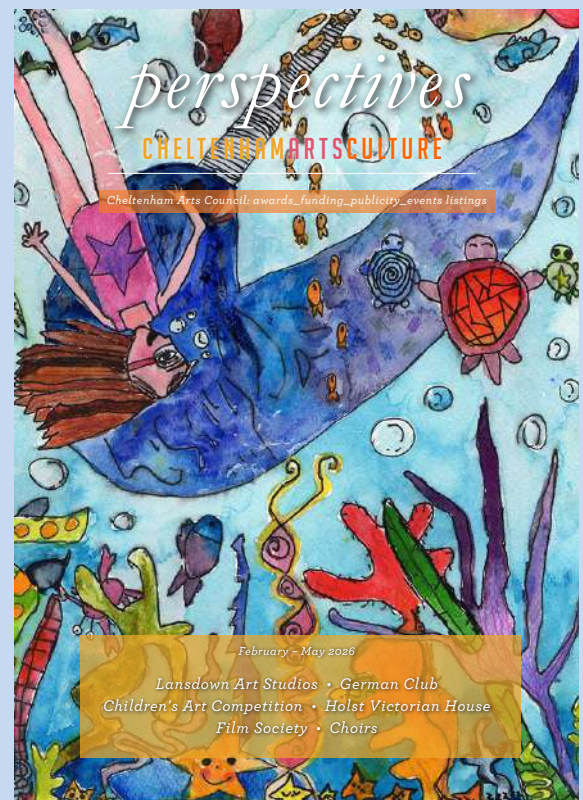
**Cheltenham Arts Council
 Perspectives Magazine**

Cheltenham Arts Council exists to support and promote all the arts within the Cheltenham area

Welcome to the Spring 2026 edition of Perspectives!

To view please visit:

<https://www.cheltenhamartscouncil.co.uk/wp-content/uploads/2026/02/Perspectives-Issue-Spring-2026-download.pdf>



Cover Illustration:

Cheltenham Young Artist 2026
 Gardens Gallery Award Ceremony -
 January 2026

Winner Of The Primary School Section:
 'The Marine Girl' By Olivia.
 Best Primary School Entry -
 Charlton Kings Junior (CYA Trophy)

Our monthly guide to the visual arts in the Cheltenham area.

Published by ARTEbulletin, hello@artebulletin.co.uk

Cheltenham Arts Network

To keep up to date, on future events, please visit FB: **Cheltartsnetwork** or if you'd like to join our mailing list or have suggestions for future meetings, contact

cheltartsnetwork@gmail.com



Enabling artists to create opportunities and address challenges facing practitioners in the town through meetings, events and sharing information. Created to support the ecology of artists and producers in the Cheltenham area.

Create Gloucestershire creategloucestershire.co.uk

CREATE GLOUCESTERSHIRE supports the cultural and creative industries in Gloucestershire. You'll find the **programmes** they are working on directly accessible from the drop-down tab in the navigation. Also added is clearer signposting to all the resources they have to share - such as **job and volunteering opportunities** and **ideas** for **getting into creative careers**.

Visit the website,
creategloucestershire.co.uk/the-noticeboard

Jackson's Art Store

Griffin Mill, Thrupp, Stroud, GL5 2AZ
01453 886 560 / jacksonsart.com

**Open from Monday – Saturday
9am – 5pm. Please go and visit**

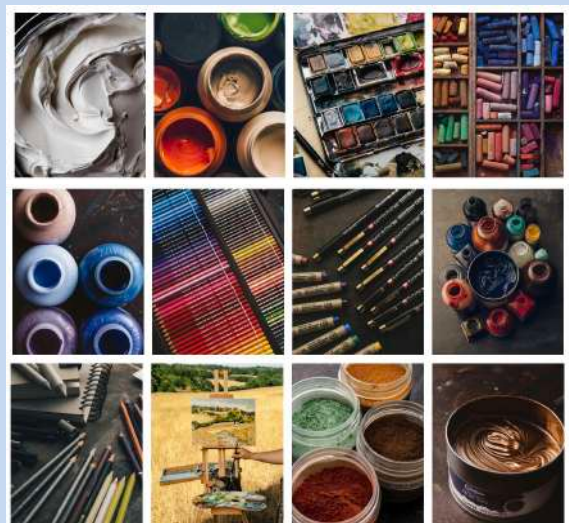
NEWS! Since January, Pegasus Art is now a **Jackson's Art store**

Housed in the 18th century mill building, rich with creative heritage and in the heart of the Cotswolds, they will continue to go from strength to strength.

Now managed by Sarah Edmonds and the knowledgeable team, they are excited to offer an even wider range of products at competitive prices, including a growing programme of art classes and workshops.

Please call ahead if you have a specific art materials request or would like to talk to one of the staff about classes and workshops on **01453 886 560**

jacksonsart.com/welcome-pegasus-customers



Jackson's

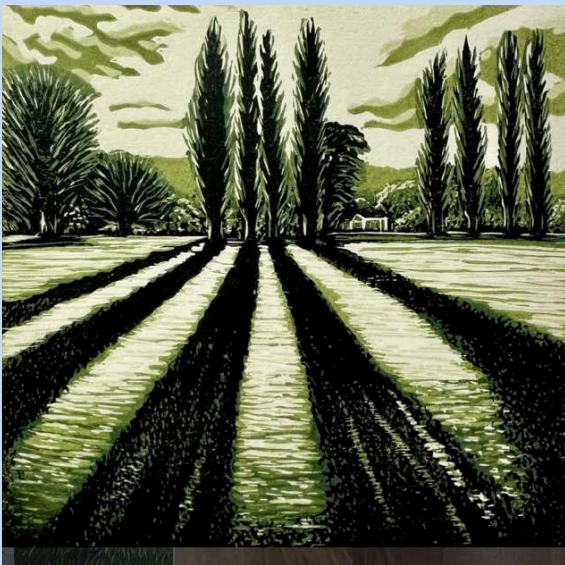
Our monthly guide to the visual arts in the Cheltenham area.

Published by ARTEbulletin, hello@artebulletin.co.uk

Support the ART Bulletin

BECOME A SUPPORTER

The **ART ebulletin** has always been a free resource for artists, arts organisations and art lovers alike. It champions all forms of visual art locally, commercial or not. We don't charge for advertising, as we think it should remain an independent directory that is available to all. As its popularity grows so does the time it takes to pull it together. If you value it, are able and would like to help support the cost of producing it each month, then **please consider giving an annual donation and help keep this valuable resource viable.**



Simply visit :

paypal.me/artebulletin

- enter your amount and press send.

alternatively, email:

hello@artebulletin.co.uk and we can send out further details.